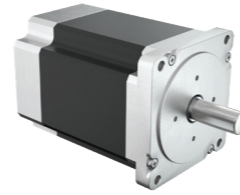


- » 86 mm square Nema 34
- » High grade Neodymium magnets
- » 1.8° step angle (+/-5%)
- » Customized solutions available on demand
- » Operating temperatures -20°C to +40°C

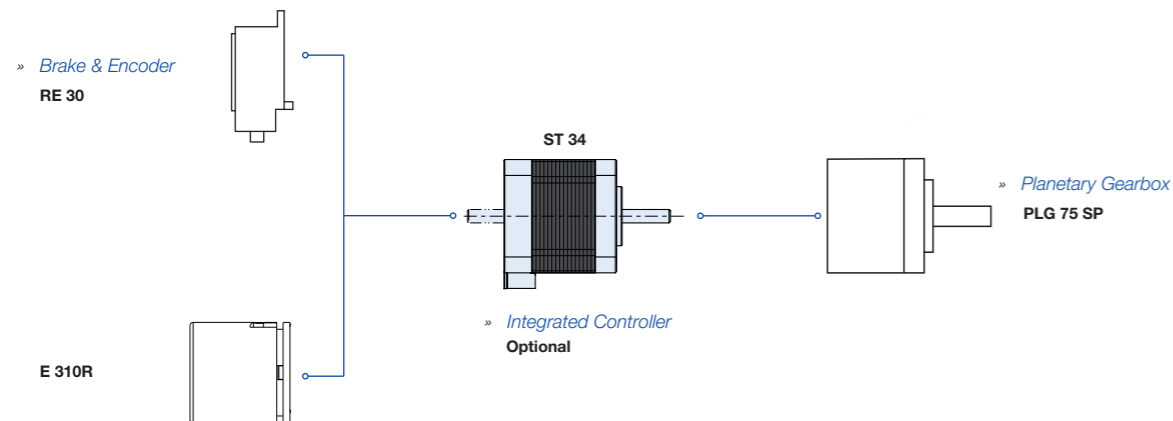
- » Sinusoidal back-EMF optimized for microstep operation and hi holding torque
- » Insulation Class 130 (B)
- » With external STE controller on request
- » For stock program please go to www.dunkermotoren.com/en/configuration



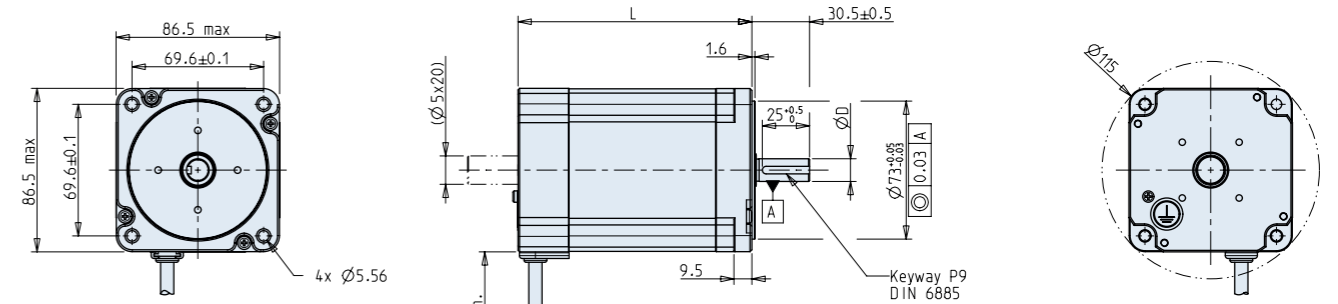
Data		ST 34x37			ST 34x48			ST 34x55			ST 34x62
Rated phase current	A	3.00	5.50	8.00	3.00	5.50	8.00	3.00	5.50	8.00	8.00
Phase resistance	Ohm	1.240	0.420	0.200	1.500	0.465	0.215	1.700	0.550	0.290	0.330
Phase inductance	mH	12.00	3.60	1.65	12.96	4.00	1.85	20.00	5.60	2.60	2.88
Holding torque Bipolar	Ncm	520.00	550.00	550.00	700.00	700.00	700.00	1000.00	1000.00	1000.00	1200.00
Detent torque	Ncm	20.00	20.00	20.00	20.00	20.00	20.00	30.00	30.00	30.00	35.00
Rotor inertia	gcm ²	2860.00	2860.00	2860.00	4732.00	4732.00	4732.00	6018.00	6018.00	6018.00	7030.00
Max. voltage	VDC	160	160	160	160	160	160	160	160	160	160
Weight	Kg	3.000	3.000	3.000	4.000	4.000	4.000	4.600	4.600	4.600	5.400

All data measured with standard cables 500 mm at 25°C

Modular System



Dimensions in mm



Lead wires	
Colour	Function
White	phase A+
Yellow	phase A-
Red	phase B+
Blue	phase B-

» Optional Rear-Flange with centering collar 32 mm, subcircuit 45 mm M5

Motor	L	D ø	Keyway
34X37	96±0.6	12	4x4 P9
34X48	124±0.6	12	4x4 P9
34X55	141.5±0.6	12	4x4 P9
34X62	158.5±0.6	16	5x5 P9

Characteristic diagram

