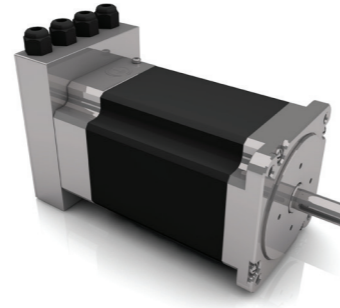


- » 2 phase Stepper Motor 1.8° step angle with integrated controller
- » 12-bit absolute magnetic encoder (single turn)
- » CANopen interface CiA 301 and CiA 402
- » Options available: EtherCAT version, Modbus RTU on RS485 version
- » Configurable resolution microstep/rev (400 to 204 800), Max. velocity 300 000 microstep/sec
- » Step accumulation with recovery (no step loss)
- » 32 programmable cycles and 10 programmable sequences including jog (velocity), indexer (position), homing, marker (rotating table)
- » Linear, parabolic and s-curve profiles
- » Commissioning software
- » Configurable digital and analogue I/Os



IO mode

CANopen version available

EtherCAT version available

Speed mode

Current mode

Positioning

Service interface

Digital inputs configurable

Digital outputs

Analog inputs

Oscilloscope software available

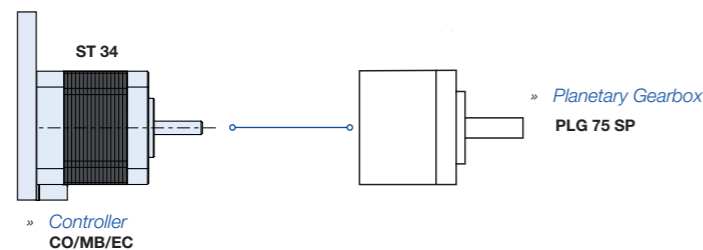
Condition monitoring

Supply voltage versions 24 - 130

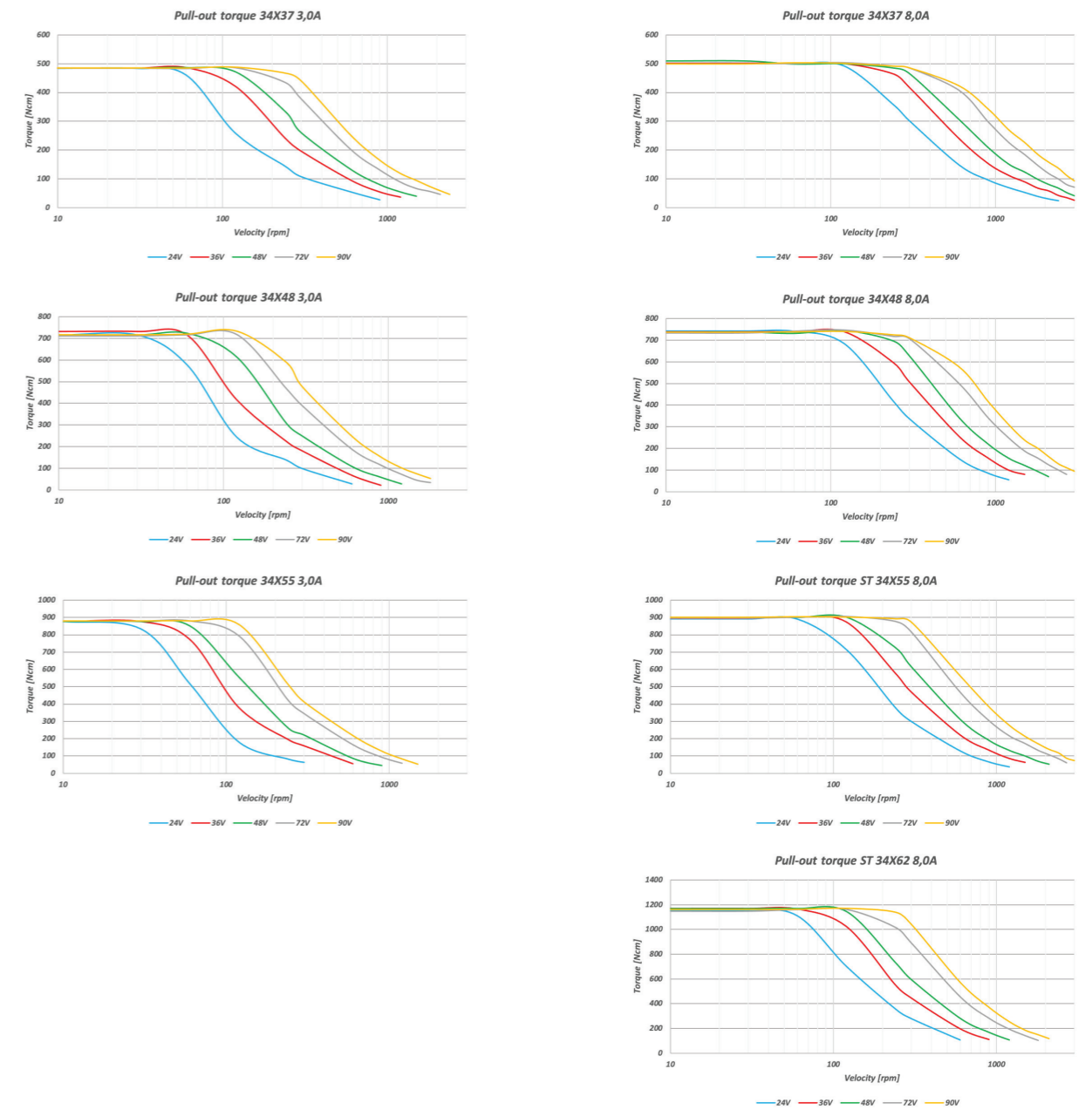
Data		ST 34x37			ST 34x48			ST 34x55			ST 34x62
Rated phase current	A	3.00	5.50	8.00	3.00	5.50	8.00	3.00	5.50	8.00	8.00
Phase resistance	Ohm	1.240	0.420	0.200	1.500	0.465	0.215	1.700	0.550	0.290	0.330
Phase inductance	mH	12.00	3.60	1.65	12.96	4.00	1.85	20.00	5.60	2.60	2.88
Holding torque Bipolar	Ncm	520.00	550.00	550.00	700.00	700.00	700.00	1000.00	1000.00	1000.00	1200.00
Detent torque	Ncm	20.00	20.00	20.00	20.00	20.00	20.00	30.00	30.00	30.00	35.00
Rotor inertia	gcm ²	2860.00	2860.00	2860.00	4732.00	4732.00	4732.00	6018.00	6018.00	6018.00	7030.00
Max. voltage	VDC	160	160	160	160	160	160	160	160	160	160
Weight	Kg	3.280	3.280	3.280	4.280	4.280	4.280	4.880	4.880	4.880	5.680

All data measured with standard cables 500 mm at 25°C

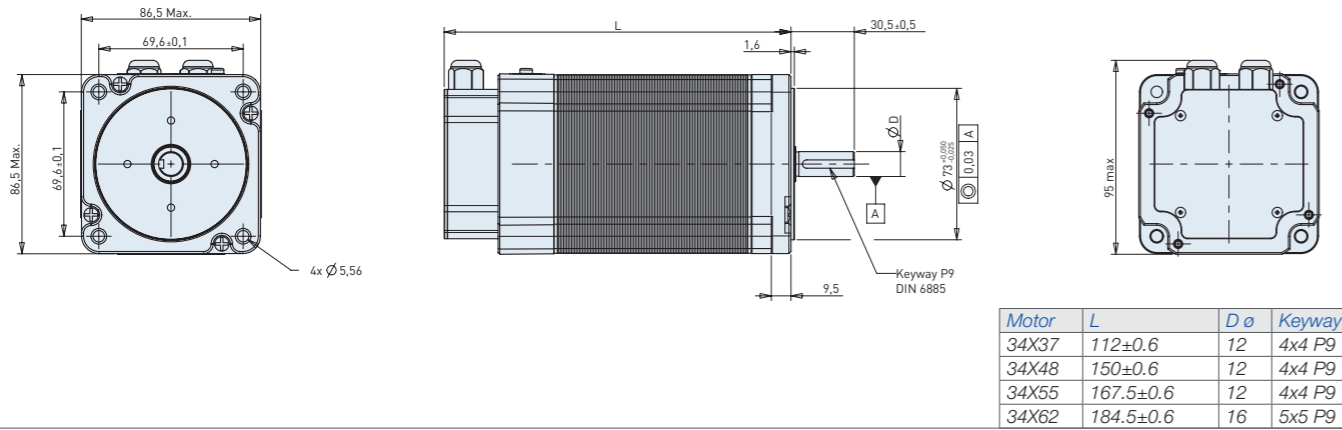
Modular System



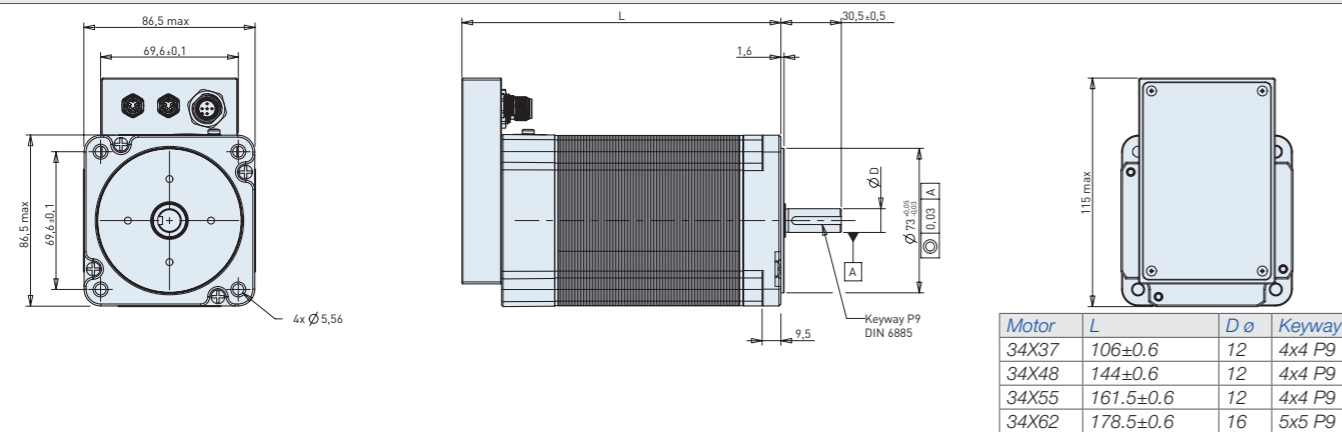
Characteristic diagram



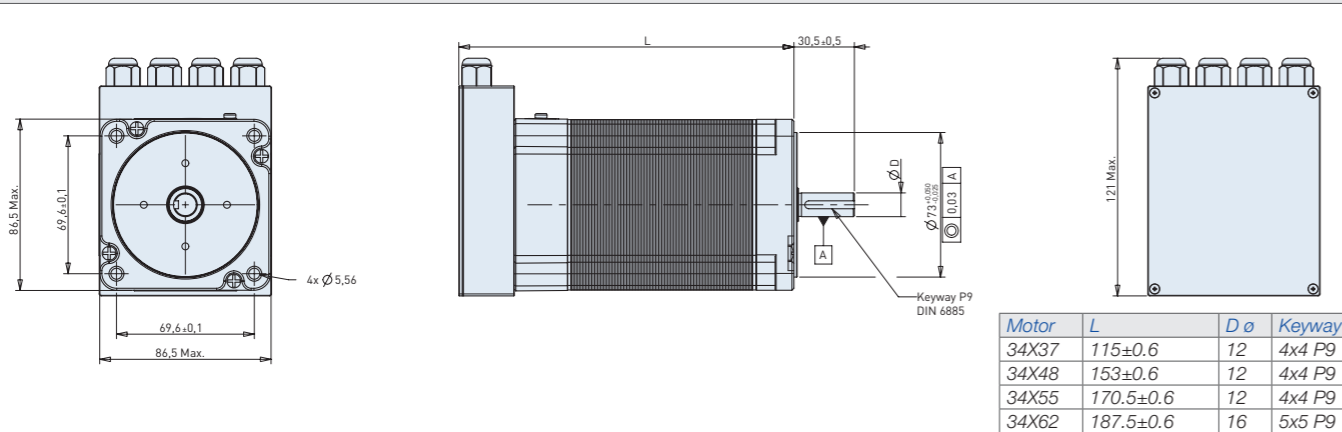
Dimensions in mm/ ST 34 CO/MB



Dimensions in mm/ ST 34 EC



Dimensions in mm/ ST 34 CO/MB HighPower



Dimensions in mm/ ST 34 EC HighPower

