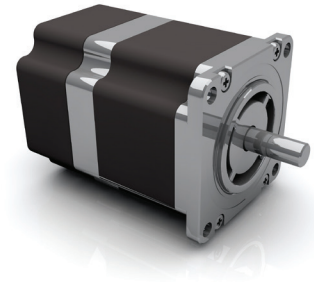


- » European development and production
- » Simple and precise
- » Long lifetime
- » Cost-effective
- » Low Noise / Low Vibration due to 256 Microsteps per full step
- » Step and direction
- » Input step resolution scalable from 8 to 64 steps
- » Energy efficiency through adjustable current
- » High accuracy



Low noise mode	High accuracy	Cost effective	Made in Europe	High efficiency	High torque	Long lifetime	Supply voltage versions 12 / 36

Data		ST 23x16			ST 23x21			ST 23x31			
Rated phase current	A	1.00	2.00	3.00	1.00	2.00	3.00	1.00	2.00	3.00	4.00
Holding torque Bipolar	Ncm	70.00	70.00	70.00	140.00	140.00	140.00	200.00	200.00	200.00	210.00
Detent torque	Ncm	3.00	3.00	3.00	5.00	5.00	6.00	8.00	7.00	7.00	7.00
Rotor inertia	gcm <sup>2</sup>	77.00	77.00	77.00	209.00	209.00	209.00	335.00	335.00	335.00	335.00
Max. voltage	VDC	24/36	24/36	24/36	24/36	24/36	24/36	24/36	24/36	24/36	24/36
Weight	Kg	0.805	0.805	0.805	1.045	1.045	1.045	1.395	1.395	1.395	1.395

All data measured with standard cables 300 mm at 25°C

## Modular System

