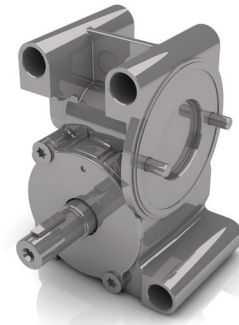


- » Housing made of high-tensile zinc die-cast
- » Compact design, ideal for door applications
- » Worm wheel made of specific, high grade material for quiet operation
- » Standard output shaft with dual ball bearings, shaft output to the left
- » Shaft output to the right or double output shaft also available
- » Combined with brushless (series BL 57)
- » Customisation by adding pulleys



Low noise



Lifetime lubrication



Low temperature

## Data | SG 65

Reduction ratio		10.25
Efficiency	%	0.8
Continuous torque	Nm	4
Peak torque	Nm	7
Axial load / radial load	N	200 / 250

## Dimensions in mm

