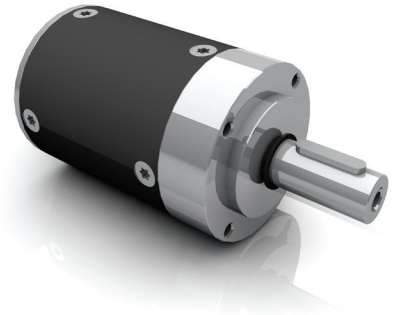


>> PLG 75 SP | Planetary Gearbox



- » Industry compatible planetary gearbox
- » High efficiency
- » All stages have straight toothing
- » Output shaft with double ball bearings
- » Optimized for stepper operation



Long lifetime



Low noise



Lifetime lubrication



Food grade lubrication



Low temperature



High efficiency



Special surface available



Protection class (up to)

Data | PLG 75 SP - Ring gear made of steel

Reduction ratio	-	4.20	5.00	7.00
Efficiency	%	90		
Number of stages	-	1		
Continuous torque	Nm	44	52	50
Acceleration torque	Nm	47	56	7.5
Emergency stop torque	Nm	8.5	10	65
Operating mode	-	S1 / S8		
Weight of gearbox	kg	1.7	1.7	1.7
Axial load / radial load (middle of key)	N	1000 / 1000		

Dimensions in mm

