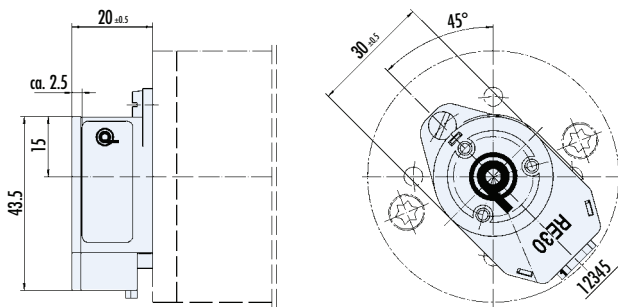




The incremental encoders operate contact-free with no wear. For cable lengths of more than 2.5 m between encoder and control, the use of an encoder with driver (TI) is recommended. The standard supply voltage of the incremental encoders is 5 VDC. 24V versions are also available in special versions. The encoders can either be mounted open to the motors or with protective hoods in protection class IP54 or higher.

Data		RE 20	RE 30	RE 30	RE 30 TI	RE 30 TI	RE 30 TI
Nominal voltage	VDC	5	5	5	5	24	5
Signals per rotation	ppr	100	500	500	500	500	1024
Interface	-	A/B	A/B	A/B/I	A/B/I	A/B/I	A/B
Rise time	ns	15	200	180	20	2000	20
Fall time	ns ¹⁾	15	50	49	20	2000	20
Input current	mA	25	40	85	165	100	120
Output voltage (low-Max.)	VDC	0.6	0.4	0.4	0.5	1.2	0.5
Output voltage (high-min.)	VDC	2.4	2.4	2.4	2.5	22	2.5
Output current Max.	mA	20	5	5	20	30	20
Operating temperature	°C	-20...+85	-40...+100	-40...+100	0...+70	-25...+85	0...+70
Protection class	IP	30	30	30	30	30	30

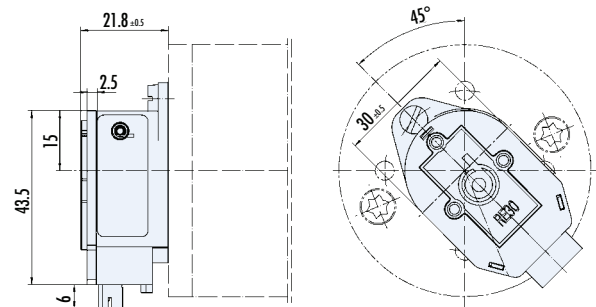
RE 30 (without cover) IP 30



Suitable connector with 500 mm strand

Pin	RE 30
1	GND 0V
2	(I)
3	A
4	Vcc 5V
5	B

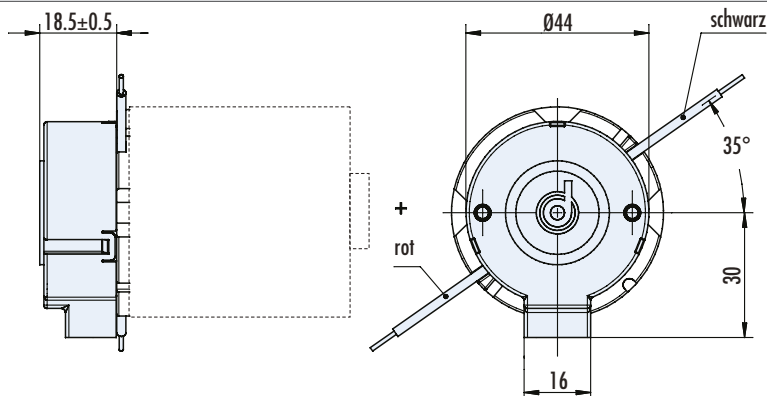
RE 30 TI (without cover) IP 30



Suitable connector with 500 mm strand

Pin	RE 30		
1	n.c.	6	A
2	Vcc 5V	7	/B
3	GND 0V	8	B
4	n.c.	9	(/I)
5	/A	10	(I)

RE 20 (without cover) IP 30



Pin	RE 20
1	GND 0V
2	-
3	A
4	Vcc 5V
5	B