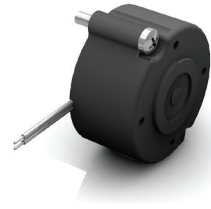


» Available on request

The brakes are designed as static brakes, but have emergency stop characteristics. The performance data are guideline values that can deviate in individual cases. When selecting the brakes, carefully check and coordinate installation situations, braking torque fluctuations, friction work, running-in behaviour and wear as well as ambient conditions. In the event of temperature fluctuations, the torque can drop sharply, e.g. due to condensation. During prolonged standstill, the friction linings can stick to the friction surfaces. The user must take appropriate counter-measures.



E 46 A

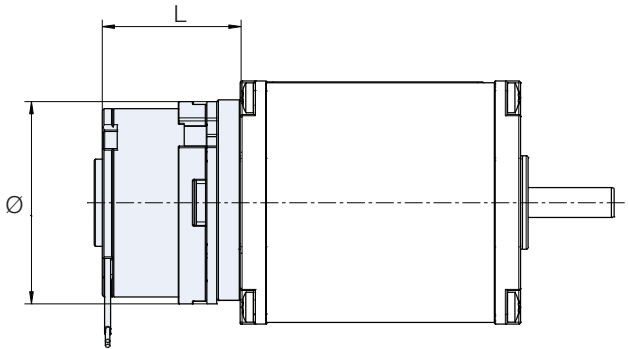


E 90 R

Data		E 46 A	E 90 R	E 310 R
Nominal voltage	VDC	24	24	24
Nominal torque*	Nm	0.3	1	3.3
Nominal current*	mA	260	310	530
Nominal input power*	W	6.3	7.5	12.7
Activation time	ms	8	30	20
Deactivation time	ms	5	30	65
Protection class	IP	20	20	20
Weight	kg	0.1	0.45	0.5

* Values valid in run-in condition

Brakes IP 20



Brakes are not in extruded body

Length (L in mm)		
	E 46	E 90
Ø	46	59
L	25.5	42.3
Strand colour	grey	grey
Strand colour	grey	grey
Strand length	500	300